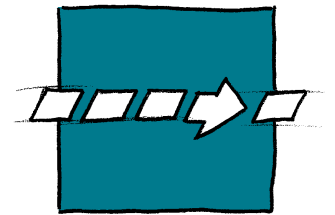


The Straight Conveyor for Applications where Hygiene counts



TRANSVER Wash-Down Straight Conveyor

TW

Description of function

TRANSVER Wash-Down Straight Conveyor has been specifically developed to comply with the strict hygiene standards required for the processing and packaging of fresh and frozen foodstuffs. The TRANSVER wash-down conveyor system is completely manufactured from stainless material, seam areas and joints are entirely welded or sealed and its design is suitable for full hosing down with jet water and cleaning agents.

Minimal belt transition points due to the use of cylindrical end rollers with diameter of 14mm or knife edges with radius 3 mm allow soft and gentle handling of small products. Belt can be dismantled sidewise within a short time. Due to a modular design and the availability of various options the TRANSVER wash-down conveyor can be easily adapted to customer needs.

Areas of application

Specifically targeted at manufacturing- and processing companies of:

- Meat
- Fish
- Cheese and other dairy products
- Frozen food
- Convenience-Food
- Non-Food goods with most stringent hygiene and wet-cleaning requirements

Technical data

| | |
|---------------|----------------------------------|
| Belt speed | <i>Up to 90 m/min</i> |
| Conveyor load | <i>Up to 15 kg/m²</i> |
| Noise level | <i>Depending on dimensions</i> |

Performance data may vary according to application

Standard specifications

Belt drive

The drive unit consisting of gear box, motor and drive roller can be mounted on the infeed or discharge section. The conveyor belt can be tensioned centrally without changing the length of the conveyor.

Conveyor belt

- Belt quality according to customer needs
- Endless welded
- Sealed edges (on request)
- Compatible with foodstuffs (FDA / HACCP)
- Changing of belt sidewise

Enclosure

IP65 / Dairy standard

End rollers

Cylindrical end rollers with 14 mm diameter

Supports

- Supports for infeed and discharge height of 250-1500 mm
- Sealed profiles

Safety

- CE manufacturer declaration
- Meets standards for increased hygienic requirement

Finish

Frame, supports, end and tensioning rollers and bearings are made of stainless steel (V2A). Seam areas and joints are entirely welded or sealed. Visible surfaces are polished.

Your benefits

- Favourable price-performance ratio:
 - Simple modular design allows easy adaptation to customer needs
 - Fast installation and commissioning
 - Low maintenance costs
- High productivity:
 - High reliability due to sturdy design, proven in multishift operation
 - Low maintenance requirement and easy belt change
- Safe and gentle handling of small, fragile products due to minimal belt transition points with Ø 14 mm cylindrical end rollers and knife edges
- Complying with high hygiene standards, suitable for full hosing down with jet water and cleaning agents.
- Short delivery time

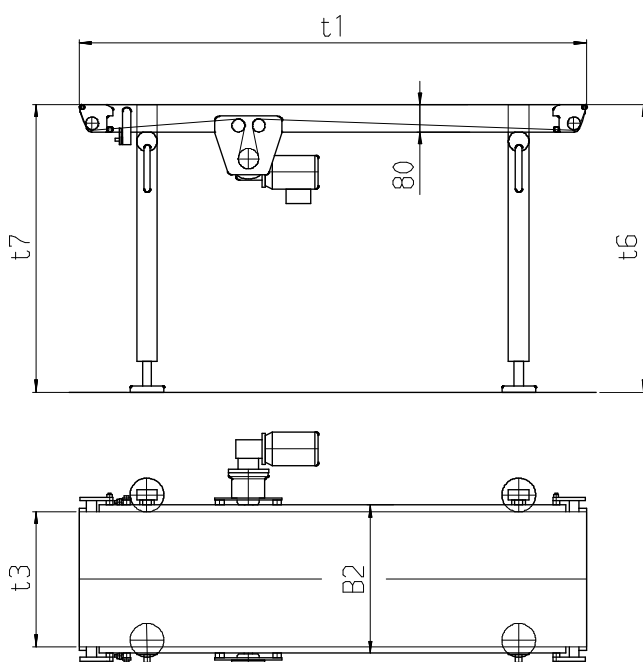
Mechanical options

- End rollers \varnothing 54 mm
- Knife edge, radius 3 mm
- Belt scraper (roller scrapers are included in standard)
- Supports on castors
- Special hygiene supports
- Catch tray
- Conveyor connections
- Mounting rail
- Guides
- Trunking
- Different belt qualities on customer specifications
- Further options on request

Electrical options

- Other drive units
- Frequency converter
- Disconnecter
- Further options on request

Dimensions [mm]



| | |
|-----------------------------|-------------------------------------|
| Conveyor length t_1 | 750 to 24000 mm |
| Belt width t_3 | 100 to 600 mm in steps of 100 mm |
| Frame width B_2 | $t_3 + 38$ mm |
| Frame height | 80 mm Max. 210 mm without motor |
| Infeed height t_6 | 250 to 1500 mm |
| Discharge height t_7 | 250 to 1500 mm |
| Other dimensions on request | |