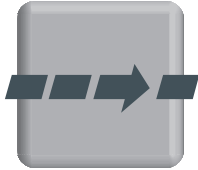


Inspiring technology!



Short and reliable

TRANSVER Straight Conveyor Side Plate Type TP

Description of function

The TRANSVER Straight Conveyor, side plate type has a modular structure and is assembled according to your individual requirements. Whether you choose the ceiling suspension or the driven side guides, all components are coordinated with one another to ensure easy servicing and reliability. End rollers with a diameter of 14 mm gently convey even the smallest products over the belt transition points.

This short straight conveyor, side plate type was developed for use in restricted conditions. Even the widest belt of 1400 mm operates reliably with perfect alignment. 1400 mm zuverlässig und spurtreu laufen.

Areas of application

Can be used for a variety of purposes in both the food and non-food industries to provide reliable transportation. Examples include:

- Goods (such as chocolate, biscuits, confectionery)
- Food (such as fish, meat and pasta)
- Beverages (such as bottles, cans)
- Frozen food
- Washing products/detergent industry
- Chemicals/pharmaceuticals/cosmetics
- Mechanical industry

Technical data

Belt speed	up to 90 m/min
Conveyor load	up to 15 kg/m ²
Noise level	depending on dimensions

Performance data may vary according to application

Specifications

Belt drive

The geared motor and the rubberised drive roller are secured on the belt tensioning station as the drive unit. This station allows the conveyor belt to be tensioned centrally without changing the length of the belt.

Conveyor belt

- Coated 1- or 2-layer polyester fabric
- Endless welded
- Compatible with foodstuffs (FDA/HACCP)
- Changing a belt requires approximately 20 minutes (excluding built-on components).

Belt tracking unit

The belt tracking unit ensures perfect alignment and optimal service life.

Supports

With supports for floor mounting

- Fixed (adjustable ± 30 mm)
- Mobile (on castors)

Ceiling suspension

Safety

- CE manufacturer declaration

Finish

- Mild steel, choice of RAL shade
- Stainless steel

Power unit

- Lubricant
 - Safety class
- USDA-H1 food safe
IP54

Hygiene Belt Systems

Your benefits

Favourable price-performance ratio

- Short design
- Fast mounting/initial operation
- Almost no maintenance required
- Can be expanded using the modular system

High productivity

- High availability due to robust construction (multiple shifts proven)
- Convenient for servicing
- Fast and easy belt changing

Safe and gentle handling of small, fragile products thanks to

- Adjustable end roller units
- End rollers with 14 mm / 10 mm diameter and knife edge
- Belt runs precisely on track

High hygiene standards

- Chassis construction open at the bottom
- High accessibility

Mechanical options

- Belt scraper
- Catch tray
- Knife edge radius 3 mm
- Ceiling suspension
- Conveyor connections
- Vakuüm type
- Additional safety guard
- Guides*
- Driven side guides*
- Lineal*
- Trunking

Further options on request

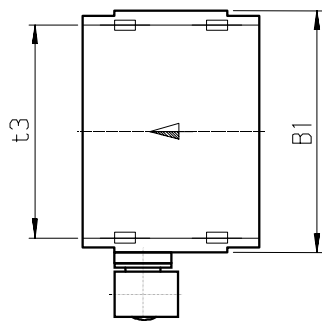
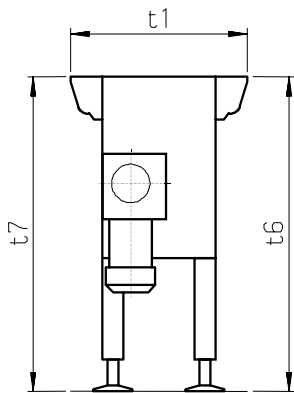
*See separate leaflet

Electrical options

- Servo motor for belt drive
- Disconnecter
- Increment transmitter
- Emergency stop
- Further options on request

Further options on request

Dimensions [mm]



Conveyor length t1	500 to 1000 mm
Belt width t3	500 to 1400 mm in steps of 50 mm
Total width B1	t3 + 82 mm
Infeed height t6	690 to 1500 mm
Discharge height t7	690 to 1500 mm
Assembly angle	depending on products and belt surface

Other dimensions on request